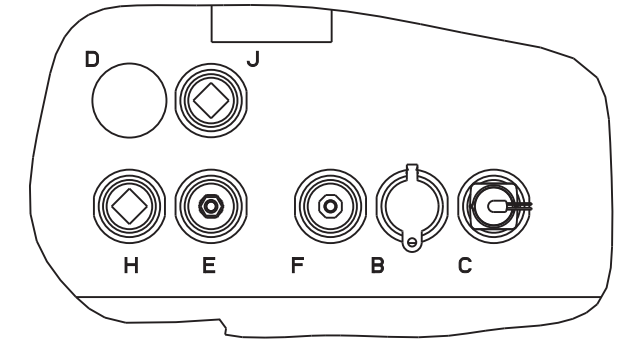
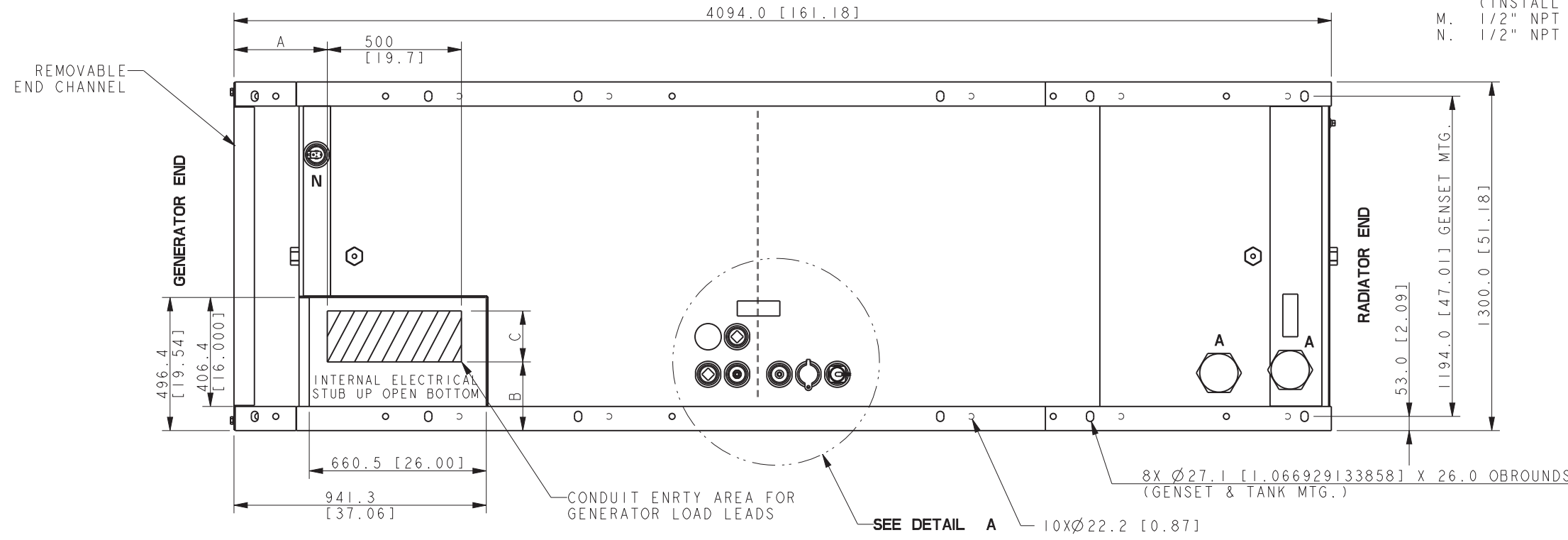


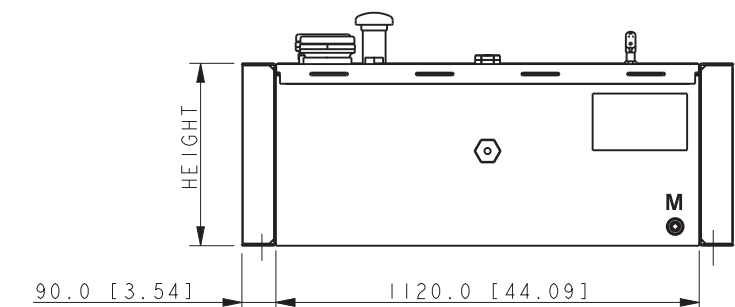
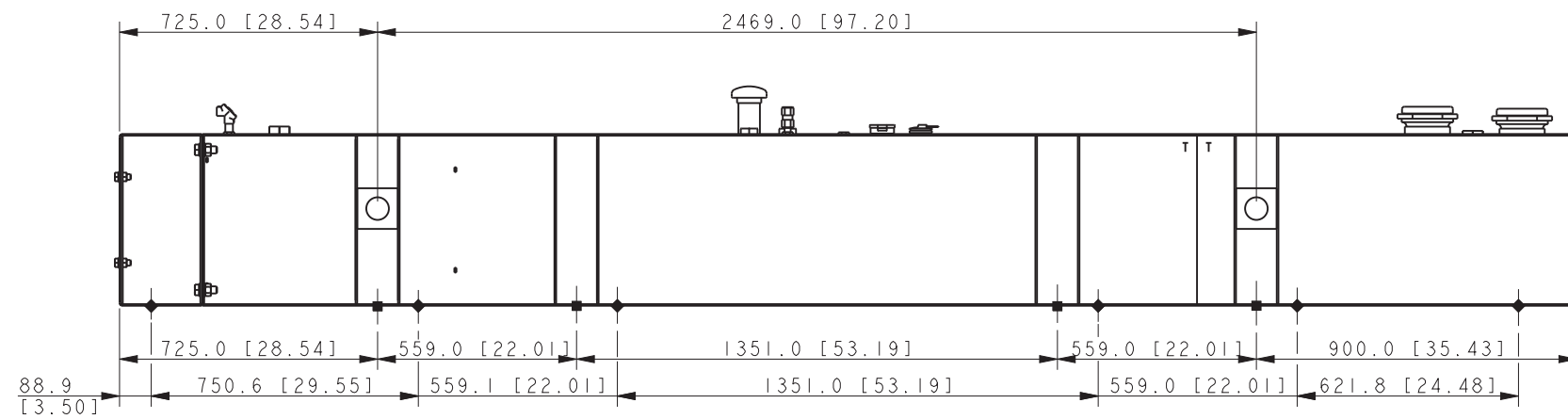
MODEL	CAPACITY		WEIGHT		HEIGHT		E-Vent	
	LITERS	GAL	KG	LBS	MM	IN	SIZE (IN)	QTY
180/200kW	1514	400	933	2057	482.6	19.0	4.0	2.0
180/200kW	2871	758	1327	2926	889.0	35.0	5.0	2.0

TANK FITTINGS:

- A. 'A' NPT EMERGENCY VENT FITTING PER NFPA 30 WITH VENT CAPS
- B. 2" NPT FUEL FILL FITTING WITH LOCKABLE CAP
- C. 2" NPT FUEL LEVEL GAUGE FITTING
- D. 2" NORMAL VENT FITTING WITH MUSHROOM VENT CAP AND 5" RISER
- E. 2" NPT FITTING FOR REMOVABLE ENGINE SUPPLY DIP TUBE (3/8" NPT FEMALE WITH CHECK VALVE)
- F. 2" NPT FITTING FOR REMOVABLE FUEL RETURN DIP TUBE (3/8" NPT FEMALE)
- H. 2" NPT FOR LOW LEVEL SWITCH (SET AT 50% FULL, SILICONE PACKED)
- J. 2" NPT ADDITIONAL FITTING FOR OPTIONAL ACCESSORY (INSTALL STEEL 2" NPT PIPE PLUG)
- M. 1/2" NPT BASIN DRAIN (INSTALL STEEL 1/2" NPT PIPE PLUG)
- N. 1/2" NPT FOR FUEL IN BASIN SWITCH (INSTALL STEEL 1/2" NPT PIPE PLUG)



DETAIL A
SCALE 0.200



GENSET	A	B	C
180KW	571 [22.5]	310 [12.2]	90 [3.5]
200KW	561 [22.1]	195 [7.7]	100 [3.9]

STANDARD TANK
180 MODEL 60HZ 4S15, 4S12X & 4S13X
200 MODEL 4UA9, 4UA13 & 4S13X
RECONNECTABLE
IMPROVED MOTOR STARTING (IMS) &
600V ALTERNATOR
JOHN DEERE 6068HF485, TIER III

REV	DATE	ON COMPOSITE DWGS. SEE PART NO. FOR REVISION LEVEL	BY	UNLESS OTHERWISE SPECIFIED - 1) DIMENSIONS ARE IN MILLIMETERS 2) TOLERANCES ARE:
B	11-16-10	(A-8, A-7, A-6, A-5, A-4) 88.9, 750.6, 559.1, 1351.0, 12XØ22.2, 559.0, 621.8 ADDED [90633]	JOEL	X.XX ± 0.25 X.X ± 1.0 X ± 1.5
C	6-29-11	SEE SHEET 2 [91839]	KMP	ANGLES ± 0° 30' MAX.
D	12-1-11	VIEWS UPDATED [92417-4]	PKD	THIRD ANGLE PROJECTION
E	2-7-12	(A-4) 180 & 200 MODEL NOTE UPDATED, SEE SHEET 2 [92681]	PKD	APPROVALS
F	08-11-14	(A-4) STANDARD TANK NOTE ADDED & SEE SHEET 2 [CT89102]	PAS	CHECKED DATE APPROVED DATE

KOHLER CO. METRIC PRO-E
POWER SYSTEMS, KOHLER, WI 53044 U.S.A.
THIS DRAWING IN DESIGN AND DETAIL IS KOHLER CO. PROPERTY AND MUST NOT BE USED EXCEPT IN CONNECTION WITH KOHLER CO. WORK. ALL RIGHTS OF DESIGN OR INVENTION ARE RESERVED.

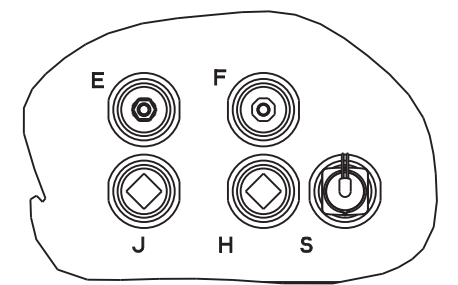
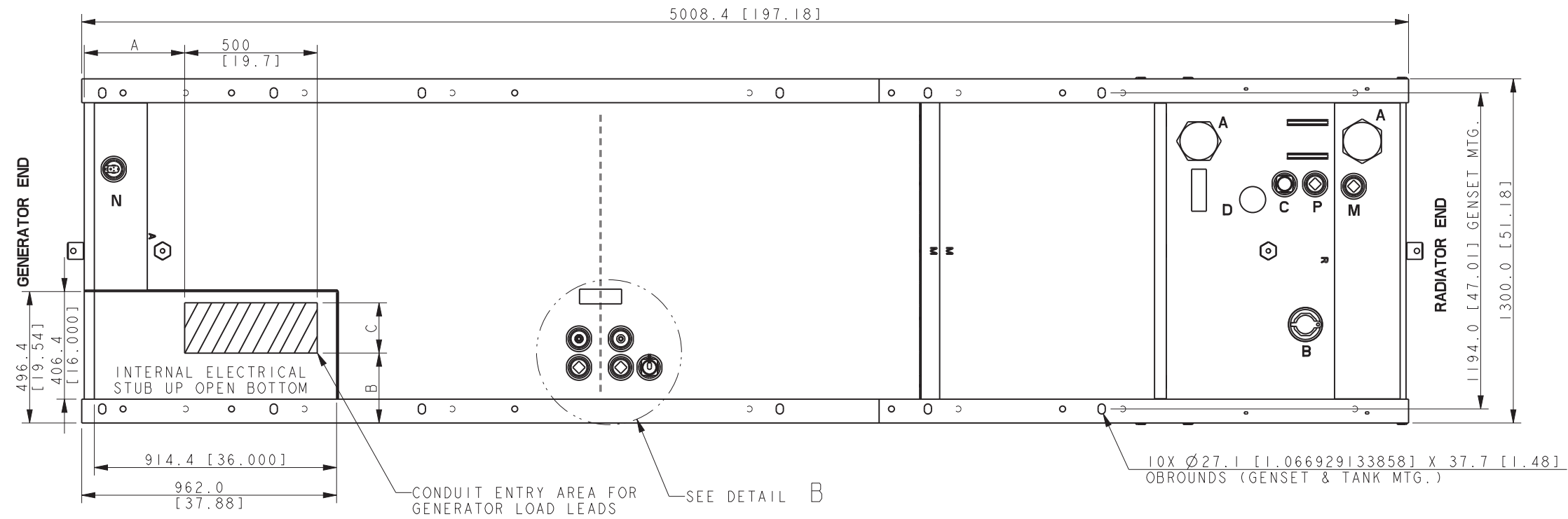
DIMENSION PRINT

SCALE 0.10 CAD NO. SHEET 1 of 2
DWG NO. **ADV-7859**

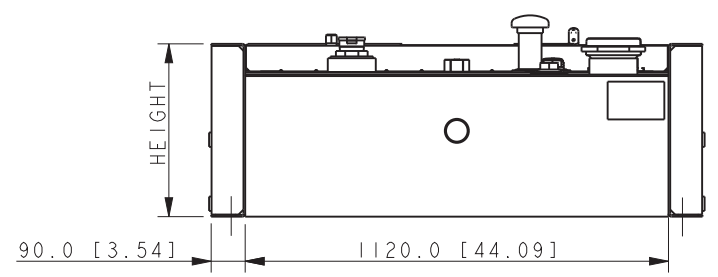
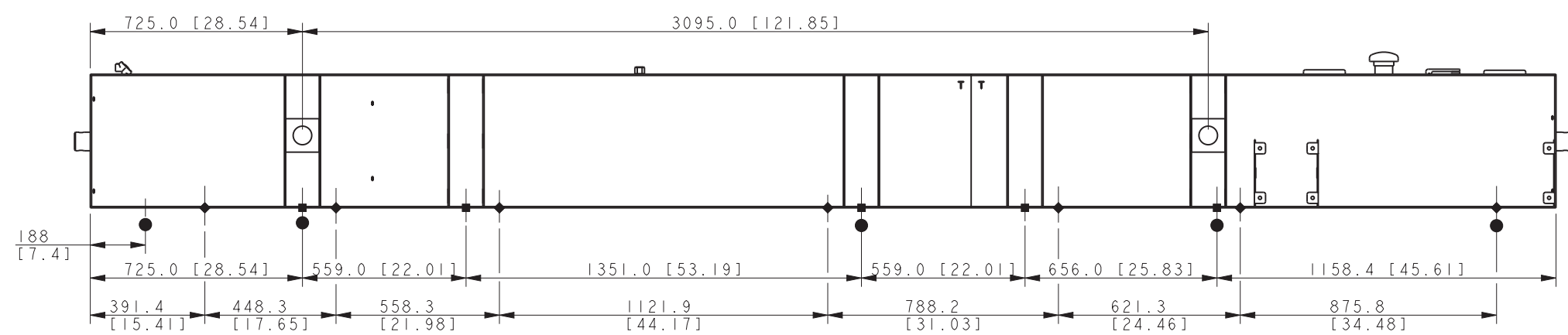
MODEL	CAPACITY		WEIGHT		HEIGHT		E-Vent	
	LITERS	GAL	KG	LBS	MM	IN	SIZE (IN)	QTY
180/200kW	1576	416	1234	2721	457.2	18.0	4.0	2.0
180/200kW	2896	765	1560	3440	762.0	30.0	5.0	2.0

TANK FITTINGS:

- A. 1/2" NPT EMERGENCY VENT FITTING PER NFPA 30 WITH VENT CAPS
- B. 4" NPT FUEL FILL FITTING WITH LOCKABLE CAP AND RISER. PLUG & SHIP WITH TANK NI NBOX ATTACHED TO TANK
- C. 2" NPT FUEL LEVEL GAUGE FITTING
- D. 2" NPT NORMAL VENT FITTING WITH MUSHROOM VENT CAP AND 5" RISER.
- E. 2" NPT FITTING FOR REMOVABLE ENGINE SUPPLY DIP TUBE (3/8" NPT FEMALE WITH CHECK VALVE)
- F. 2" NPT FITTING FOR REMOVABLE FUEL RETURN DIP TUBE (3/8" NPT FEMALE)
- H. 2" NPT FOR LOW LEVEL SWITCH (SET AT 50% FULL, SILICONE PACKED)
- J. 2" NPT ADDITIONAL FITTING FOR OPTIONAL ACCESSORY (INSTALL 2" NPT PIPE PLUG)
- M. 2" NPT BASIN DRAIN (PLUGGED)
- N. 2" NPT FOR FUEL IN BASIN SWITCH
- P. 2" NPT ADDITIONAL FITTING FOR OPTIONAL ACCESSORY (INSTALL 2" NPT PIPE PLUG)
- S. 2" NPT FUEL LEVEL GAUGE FITTING WITH SENDER



DETAIL B
SCALE 0.200



- 10XØ25.4 [1.0] STANDARD MOUNTING
- ◆ 14XØ22.2 [0.88] IBC MOUNTING
- 10XØ25.4 [1.0] BOTTOM BEAM MOUNTING

STATE TANK

180 MODEL 60HZ 4S15, 4S12X & 4S13X
200 MODEL 4UA9, 4UA13 & 4S13X
RECONNECTABLE
IMPROVED MOTOR STARTING (IMS) &
600V ALTERNATOR
JOHN DEERE 6068HF485, TIER III

GENSET	A	B	C
180KW	571 [22.5]	310 [12.2]	90 [3.5]
200KW	561 [22.1]	195 [7.7]	100 [3.9]

REV	DATE	ON COMPOSITE DWGS. SEE PART NO. FOR REVISION LEVEL	BY
B	11-16-10	(A-8, A-7, A-6, A-5, A-4) 391.4, 448.3, 558.3, 1121.9 788.2, 621.3, 875.8 ADDED [90633]	JOEL
C	6-29-11	(A-8) 188[7.4] ADDED, (A-6) 10X25.4 ADDED [91839]	KMP
D	12-1-11	VIEWS UPDATED [92417-4]	PKD
E	2-7-12	(A-4) 180 & 200 MODEL NOTE UPDATED, SEE SHEET 1 [92681]	PKD
F	08-11-14	(A-4) STATE TANK NOTE ADDED & SEE SHEET 1 [CT89102]	PAS

KOHLER CO. METRIC PRO-E
POWER SYSTEMS, KOHLER, WI 53044 U.S.A.
THIS DRAWING IN DESIGN AND DETAIL IS KOHLER CO. PROPERTY AND MUST NOT BE USED EXCEPT IN CONNECTION WITH KOHLER CO. WORK. ALL RIGHTS OF DESIGN OR INVENTION ARE RESERVED.

DIMENSION PRINT

SCALE 0.10 CAD NO. SHEET 2 of 2
DWG NO. **ADV-7859**