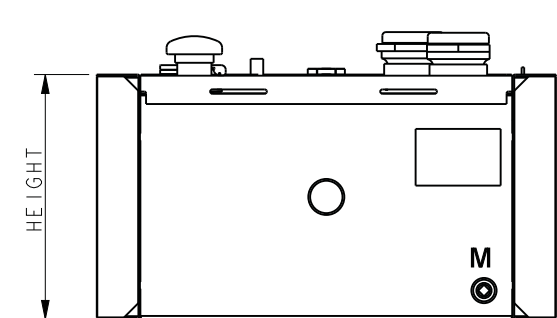
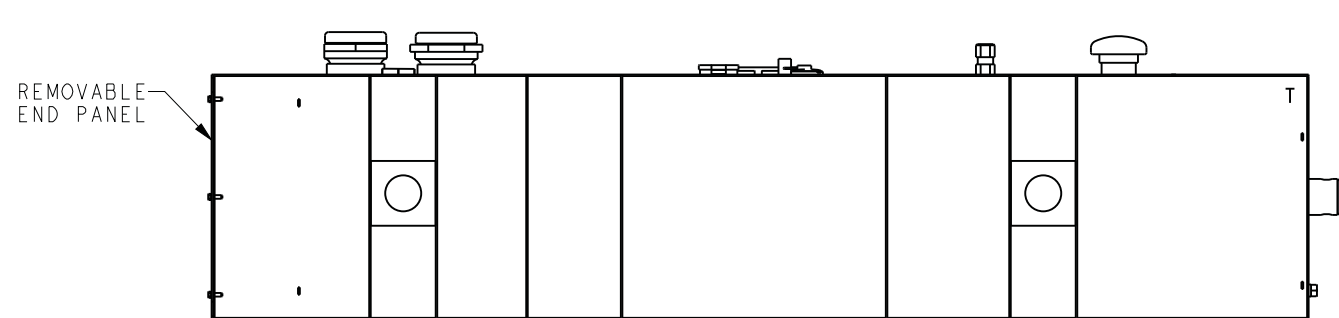
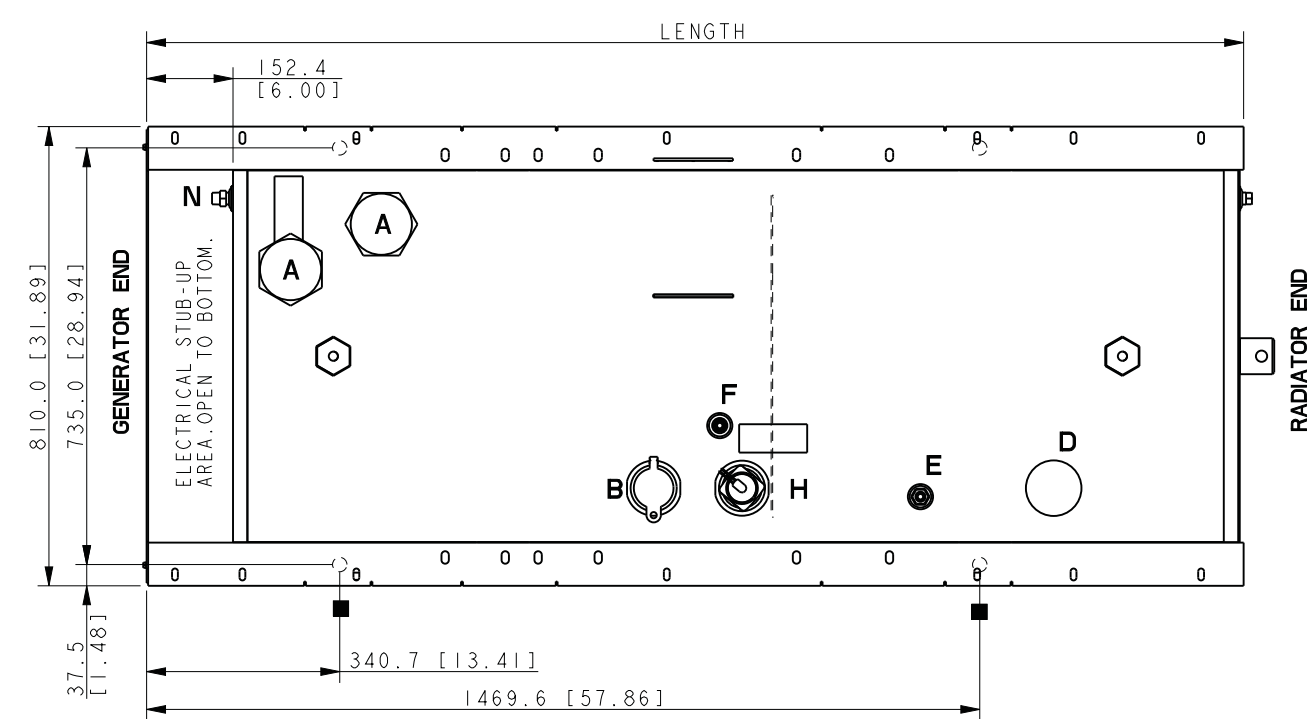


MODEL	CAPACITY		WEIGHT		LENGTH		HEIGHT		EMERGENCY VENT (A) INNER/OUTER
	LITERS	GAL	KG	LBS	MM	IN	MM	IN	
10/30kW	301	80	208	459	1935.0	76.2	431.8	17.0	3/3
10/30kW	465	123	266	586	1935.0	76.2	635.0	25.0	3/3
10/30kW	622	164	315	695	1935.0	76.2	812.8	32.0	3/3
10/30kW	791	209	362	798	2070.1	81.5	914.4	36.0	3/3

- TANK FITTINGS:**
- A. 1" NPT EMERGENCY VENT FITTING PER NFPA 30 WITH VENT CAPS (QTY 2).
 - B. 2" NPT FUEL FILL FITTING WITH LOCKABLE CAP AND 2" RISER.
 - D. 2" NPT NORMAL VENT FITTING WITH MUSHROOM VENT CAP AND 3" RISER.
 - E. 1/2" NPT FITTING FOR REMOVABLE ENGINE SUPPLY DIP TUBE (3/8" NPT FEMALE WITH CHECK VALVE).
 - F. 1/2" NPT FITTING FOR REMOVABLE FUEL RETURN DIP TUBE (3/8" NPT FEMALE).
 - H. 2" NPT FOR FUEL LEVEL SENDING UNIT.
 - M. 1/2" NPT BASIN DRAIN (INSTALL STEEL 1/2" NPT PIPE PLUG).
 - N. 1/2" NPT FOR FUEL IN BASIN SWITCH.



NOTE:
FOR FURTHER TANK DETAIL
SEE INDIVIDUAL DRAWINGS

■ 4X Ø25.4 [1.00]
STANDARD MOUNTING

STANDARD TANK

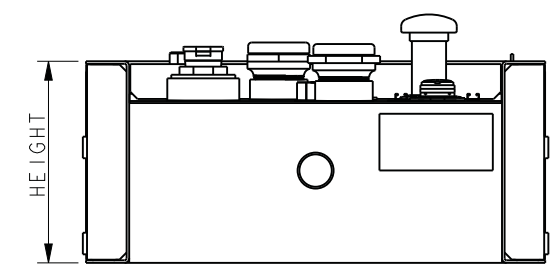
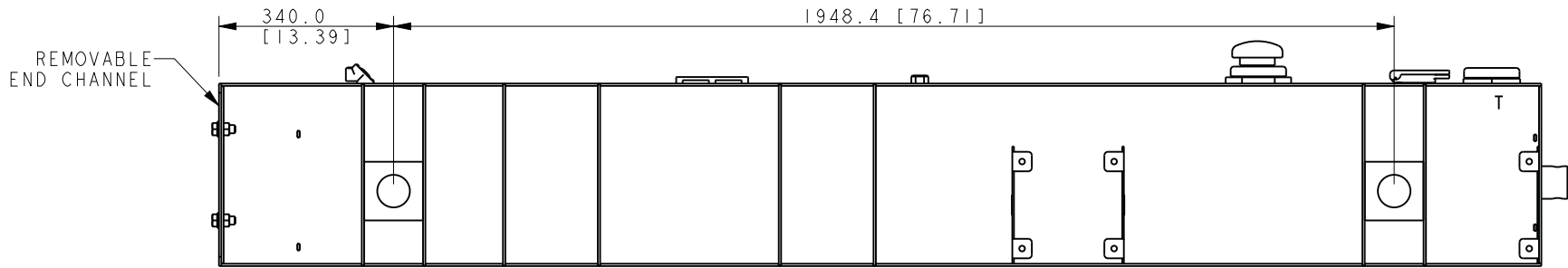
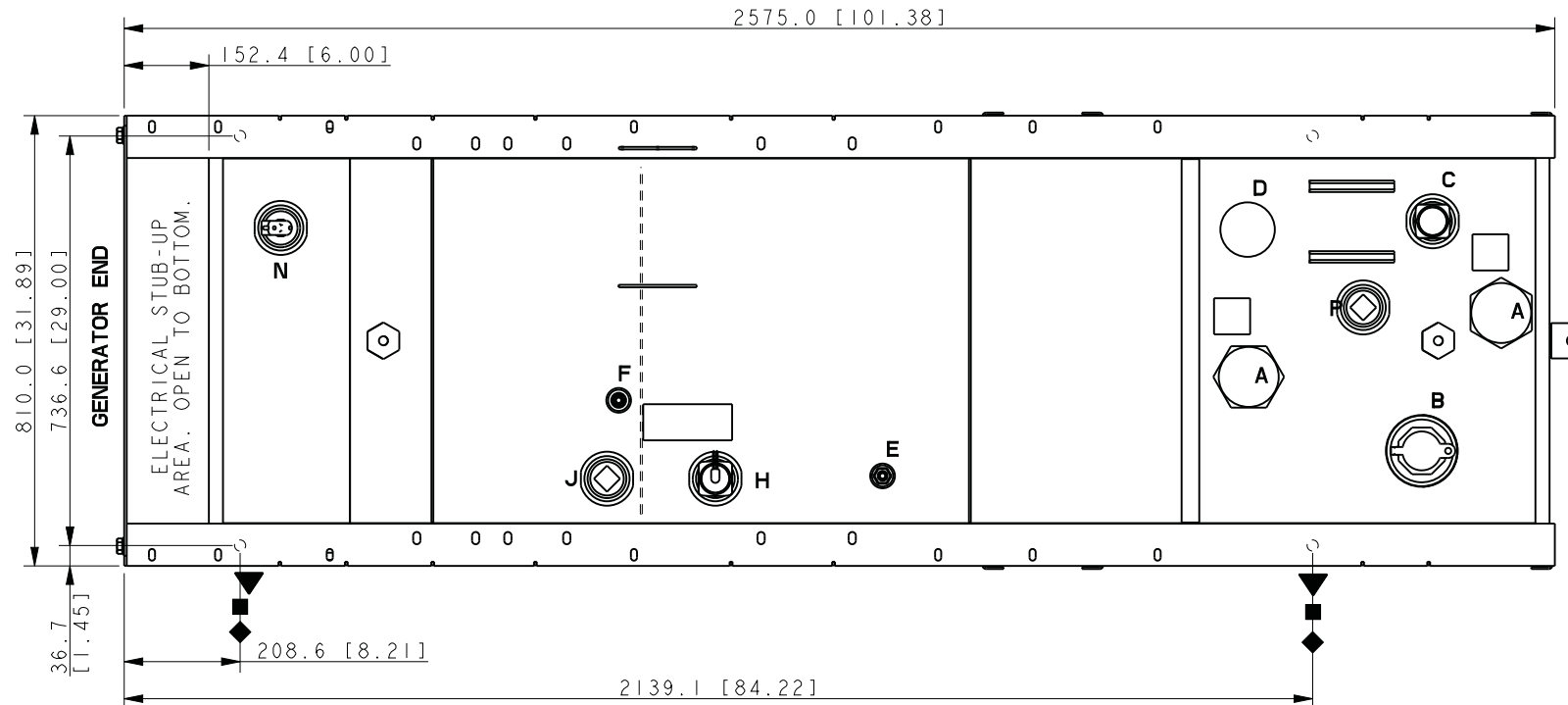
REV	DATE	ON COMPOSITE DWGS. SEE PART NO. FOR REVISION LEVEL	BY
-	11-11-13	NEW DRAWING [CT63958]	SDS
A	7-22-15	(D-7) 152.4 [6.00] STUB UP DIMENSION ADDED [CT119088]	SAK

APPROVALS	DATE
SDS	11-11-13
SDS	11-11-13
AJD	11-11-13

UNLESS OTHERWISE SPECIFIED - 1) DIMENSIONS ARE IN MILLIMETERS 2) TOLERANCES ARE: X.XX ± 0.25 X.X ± 1.0 X ± 1.5 ANGLES ± 0° 30' MAX.		KOHLER CO. METRIC PRO-E POWER SYSTEMS, KOHLER, WI 53044 U.S.A. THIS DRAWING IN DESIGN AND DETAIL IS KOHLER CO. PROPERTY AND MUST NOT BE USED EXCEPT IN CONNECTION WITH KOHLER CO. WORK. ALL RIGHTS OF DESIGN OR INVENTION ARE RESERVED.
THIRD ANGLE PROJECTION		TITLE DIMENSION PRINT
SCALE 0.15	CAD NO.	SHEET 1 of 2
ADV-8643		D

MODEL	CAPACITY		WEIGHT		HEIGHT		EMERGENCY VENT (A)
	LITERS	GAL	KG	LBS	MM	IN	INNER/OUTER
10/30kW	330	87	347	765	355.6	14.0	3/3
10/30kW	476	126	411	906	482.6	19.0	3/3
10/30kW	638	168	479	1055	609.6	24.0	3/3
10/30kW	838	221	560	1235	762.0	30.0	3/3
10/30kW	1057	279	643	1419	914.4	36.0	3/4

- TANK FITTINGS:**
- A. 1" NPT EMERGENCY VENT FITTING PER NFPA 30 WITH VENT CAPS (QTY 2).
 - B. 4" NPT FUEL FILL FITTING BUSHED TO 2" NPT WITH LOCKABLE FILL CAP AND 2" RISER
 - C. 2" NPT FUEL LEVEL GAUGE FITTING W/ DIRECT READING MECHANICAL GAUGE.
 - D. 2" NPT NORMAL VENT FITTING WITH MUSHROOM VENT CAP AND 5" RISER.
 - E. 1/2" NPT FITTING FOR REMOVABLE ENGINE SUPPLY DIP TUBE (3/8" NPT FEMALE) WITH CHECK VALVE.
 - F. 1/2" NPT FITTING FOR REMOVABLE FUEL RETURN DIP TUBE (3/8" NPT FEMALE).
 - H. 2" NPT FUEL LEVEL SENDING UNIT.
 - J. 2" NPT FITTING FOR OPTIONAL SWITCH (INSTALL 2"NPT PIPE PLUG)
 - N. 2" NPT FOR FUEL IN BASIN SWITCH
 - P. 2" NPT FITTING FOR OPTIONAL SWITCH (INSTALL 2"NPT PIPE PLUG)



NOTE:
FOR FURTHER TANK DETAIL
SEE INDIVIDUAL DRAWINGS

- 4X Ø20.0 [0.79] STANDARD MOUNTING
- ◆ 4X Ø20.0 [0.79] IBC MOUNTING
- ▼ 4X Ø20.0 [0.79] BOTTOM BEAM MOUNTING

STATE TANK

REV	DATE	ON COMPOSITE DWGS. SEE PART NO. FOR REVISION LEVEL	BY	UNLESS OTHERWISE SPECIFIED - 1) DIMENSIONS ARE IN MILLIMETERS 2) TOLERANCES ARE:
-	11-11-13	NEW DRAWING [CT63958]	SDS	X.XX ± 0.25
A	7-22-15	SEE SHEET 1 [CT119088]	SAK	X.X ± 1.0
				X ± 1.5
				ANGLES ± 0° 30' MAX.
				THIRD ANGLE PROJECTION
				APPROVALS
				DATE
				DRAWN SDS 11-11-13
				CHECKED SDS 11-11-13
				APPROVED AJD 11-11-13

KOHLER CO. METRIC PRO-E
POWER SYSTEMS, KOHLER, WI 53044 U.S.A.
THIS DRAWING IN DESIGN AND DETAIL IS KOHLER CO. PROPERTY AND MUST NOT BE USED EXCEPT IN CONNECTION WITH KOHLER CO. WORK. ALL RIGHTS OF DESIGN OR INVENTION ARE RESERVED.

TITLE: **DIMENSION PRINT**

SCALE: 0.15 CAD NO. SHEET 2 of 2
DWG NO. **ADV-8643** D